

Short update information WDP 2015.1

by Stefan Lersch, March 2016

New digital central stations / hardware

- Digikeijs DR5000
- Döhler & Haas Programmer
- Ansaloni RollerStand

Users of the WDP Small Edition, who do also own the WDP Programmer Edition, can now start the programmer functionality within Win-Digipet if both sticks (Yellow for Small and Blue for Programmer) are connected to the PC.

Vehicle Database

You can use now the new decoder type Selectrix 1 FD. Vehicles with a Selextrix function decoder can now address the functions F1 – F8.

Some function symbols are now defined as sound functions. They are marked in the vehicle database with an “S”. In this example the “Pfeife” (whistle).

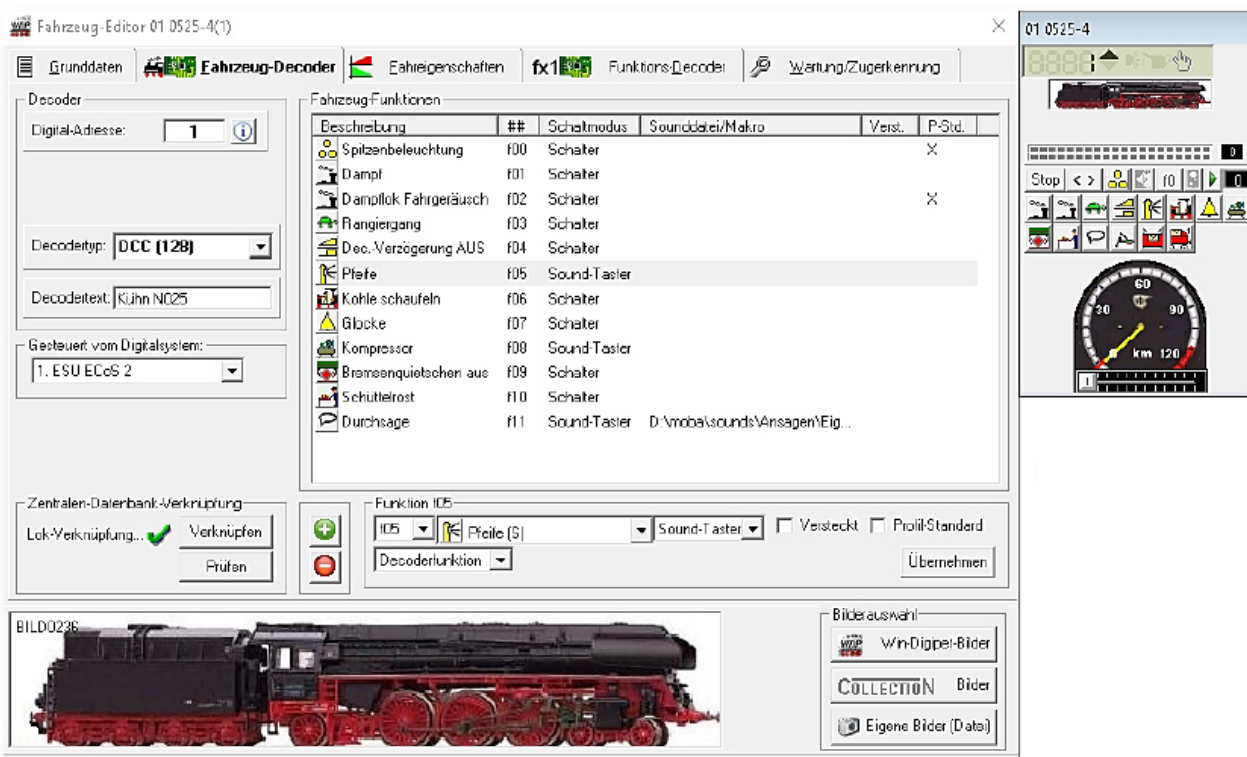


Abb. 4.1 Kennzeichnung von Sound-Funktionen hier am Beispiel einer „Pfeife“

These functions are switched off if the option “switch off all sounds of all locos” is enabled.

WDP now shows all addresses of all used vehicles – even those set to the display cabinet.

Main program

Find a train in the layout

WDP now offers the possibility to find a vehicle in the layout if you lost its track. Make a middle click on the loco control or the picture in the loco bar or loco monitor and the vehicle will be shown in the layout. This work in the train composition, too.

With a right click on a vehicle you can now edit any vehicle within a train.

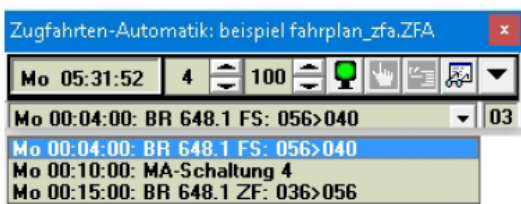
When you click in the vehicle bar on a vehicle contained within a train the loco control of the leading vehicle will be shown. However, if you hold press the shift key while clicking the control of the vehicle itself will be shown.

Train number display

When you move the mouse over a TND containing a train you will see a picture of that train. If you move the mouse over an empty TND, you will get information about the TND itself. If you press hold the Ctrl-key while moving the mouse over a TND containing a train you will also get the information about the TND.

Tour automatic

The tour automatic now shows the number of entries in the buffer.



It shows the name of the loco and to the right the number of entries in the buffer.

If you click on the green signal while running an active automatic, it will switch to yellow and only the buffer will be executed. Thereafter the signal switches to red.

Profiles

If you have a profile for a route ending at an intelligent train number display (iTND) you may get this information:

- When there's a STOP instruction at the target contact you will get the information „Move commands at elements of an iTND are ignored“.
- Otherwise you will get the information „There is no stop command at the target“.

The last case will turn into a problem if you deactivate the iTND or you chose the „stop at contact“ option in a route. In this case the train will never stop! The additional information “The train wouldn't stop at stop at contact” will be shown.

The information “Move commands at elements (here contact x) of the iTND are ignored” is dropped. Elements of an iTND are still displayed blue in the profile editor.